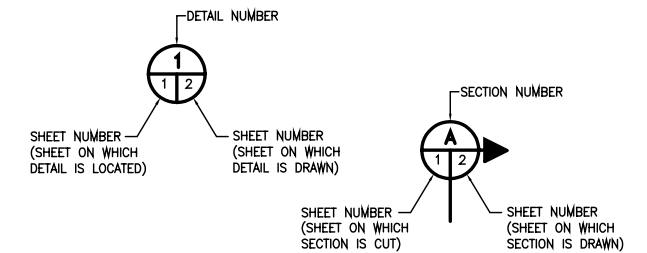


D R A W I N G I N D E X

DWG.	REV.	TITLE
M1714A-S0	0	COVER SHEET
M1714A-S1	0	PLAN AND ELEVATIONS
M1714A-S2	0	SECTIONS AND DETAILS

GENERAL NOTES:

- ALL DIMENSIONS AND DETAILS ARE TAKEN FROM ORIGINAL CONSTRUCTION DRAWINGS MADE IN 1968. ALL DIMENSIONS SHALL BE VERIFIED BY FIELD MEASUREMENTS PRIOR TO FABRICATION AND ALL DETAILS SHALL BE FIELD VERIFIED TO CONFIRM AS BUILT CONDITIONS.
- EXISTING RUBBER FENDER UNITS, STEEL WALES, TIMBER CHOCKS, WOOD FILLERS AND RUBBING STRIPS SHALL BE REMOVED AS REQUIRED FOR INSTALLATION OF NEW FENDER PILES AS INDICATED BY SCHEDULE OR AS NOTED. ALL EXISTING TIMBER FENDER PILES SHALL BE COMPLETELY REMOVED INCLUSIVE OF PULLING UP AT THE MIDLINE WHERE THE PILES HAVE BEEN SNAPPED AND ARE NOT VISIBLE FROM THE SURFACE. RUBBER FENDER UNITS, STEEL WALES, TIMBER CHOCKS, WOOD FILLERS AND RUBBING STRIPS ARE TO BE REMOVED, MODIFIED, REPAIRED AND/OR REPLACED AS INDICATED BY THE SCHEDULE OR AS NOTED.
- NEW FENDER PILES SHALL BE 70 FT. LONG HP 14X89 AND SHALL CONFORM TO THE REQUIREMENTS OF ASTM A690. ALL NEW PILES SHALL BE COATED WITH COLD TAR COATING AS INDICATED IN THE PROJECT SPECIFICATIONS.
- TIMBER FENDER PILES REQUIRED AT THE EAST CORNER OF THE BERTH SHALL BE SOUTHERN PINE CONFORMING TO ASTM STANDARD A25 "ROUND TIMBER PILES" CLASS B WITH A MINIMUM 14" BUTT DIAMETER. PRESERVATION TREATMENT SHALL BE CCA WITH A MINIMUM 2.5 PCR RETENTION. TREATMENT PROCESS SHALL BE IN ACCORDANCE WITH AWPA C3 (LATEST EDITION)
- ALL NEW TIMBERS SHALL BE DENSE NO. 1 SR, ROUGH SIZE, TREATED SOUTHERN PINE. PRESERVATIVE TREATMENT SHALL BE CCA WITH A MINIMUM 2.5 PCF RETENTION. TREATMENT PROCESS SHALL BE IN ACCORDANCE WITH AWPA C2 (LATEST EDITION).
- STEEL WALES AND PLATES SHALL CONFORM TO ASTM STANDARD A36. WALES WHICH ARE TO BE RE-USED SHALL BE REMOVED, CLEANED AND PAINTED IN ACCORDANCE WITH THE SPECIFICATIONS.
- ALL BOLTS AND WASHERS SHALL BE OF THE SIZE AND TYPE INDICATED ON THE DRAWINGS AND SHALL BE GALVANIZED IN ACCORDANCE WITH ASTM STANDARD A153. ALL BOLT HEADS IN OUTBOARD FACES SHALL BE COUNTERBORED.
- NEW FENDER UNITS SHALL BE 20" BUCKLING COLUMN UNITS AS MANUFACTURED BY SVEDALA, PART NO. E46008.
- EXISTING HARDWARE THAT IS IN GOOD CONDITION MAY BE RE-USED. NEW MATERIAL REQUIRED TO REPLACE DAMAGED OR OTHERWISE UNUSABLE ITEMS SHALL BE OF COMPARABLE TYPE AND SIZE.



SECTION & DETAIL SYSTEM

REV.	DATE	DESCRIPTION	BY
0	7/7/04	ISSUED FOR CONSTRUCTION	DWH

READY MIX USA



**PORT OF PENSACOLA
BERTH No. 6
FENDER UPGRADES**



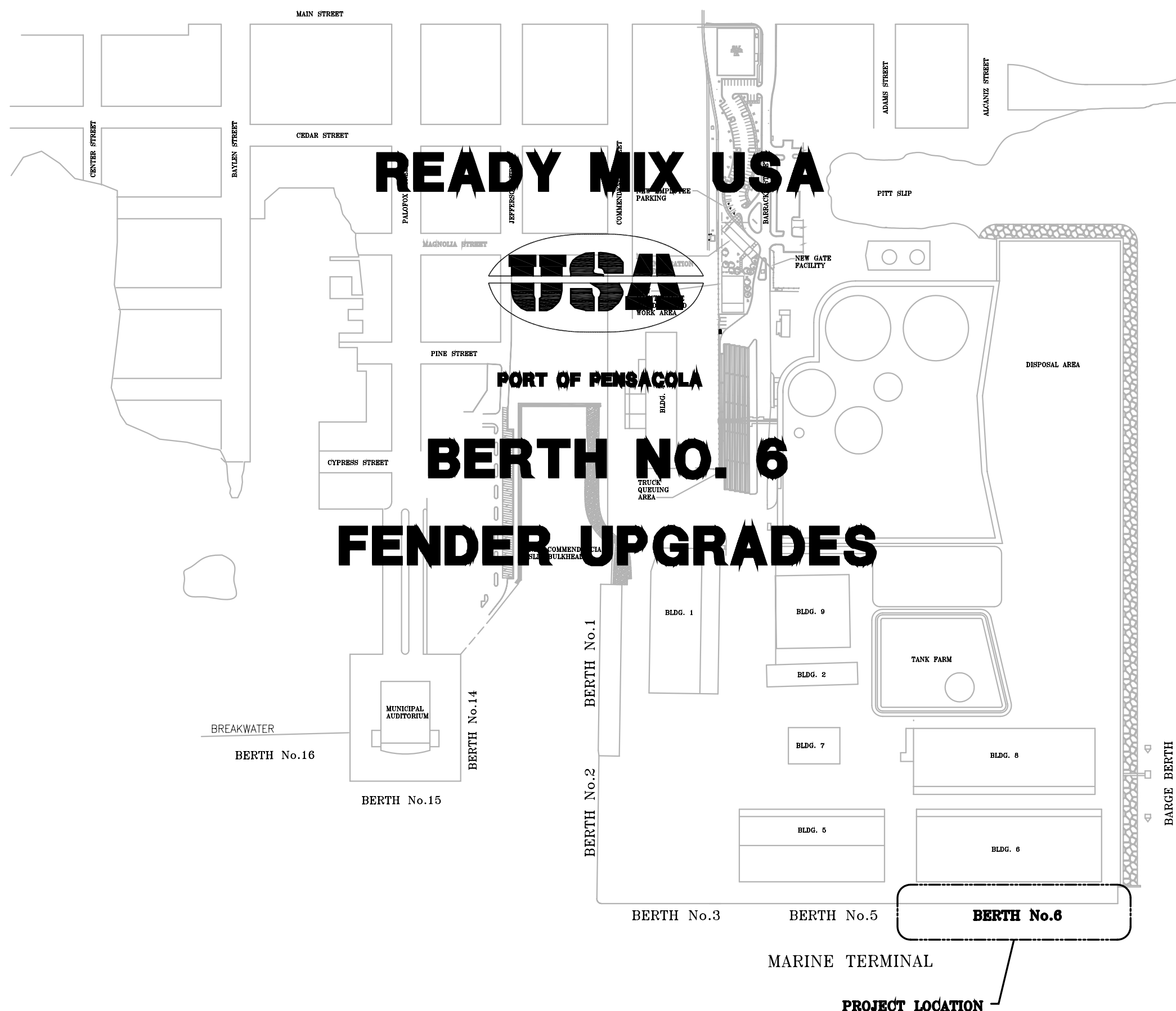
Gottlieb, Barnett & Bridges, LLC
Consulting Engineers

Drawn By: D.W.H. Date: 7/2/04
Checked By: H.A.C. Date: 7/2/04

Scale: NOTED Job No. 1714A Drawing No. 60

COVER SHEET

REV. 0

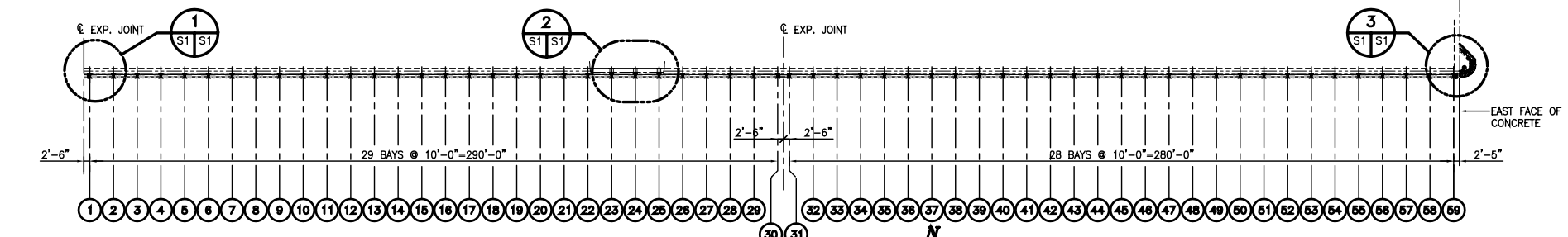


SITE PLAN
1"=150'

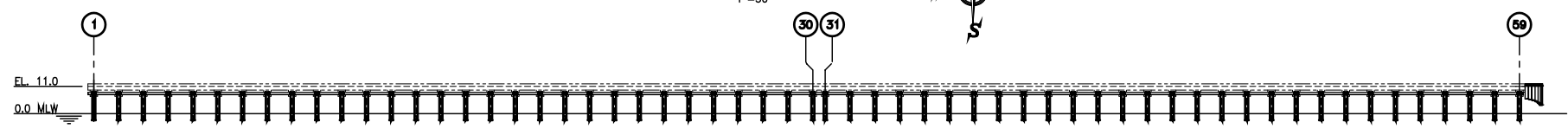
PROJECT LOCATION



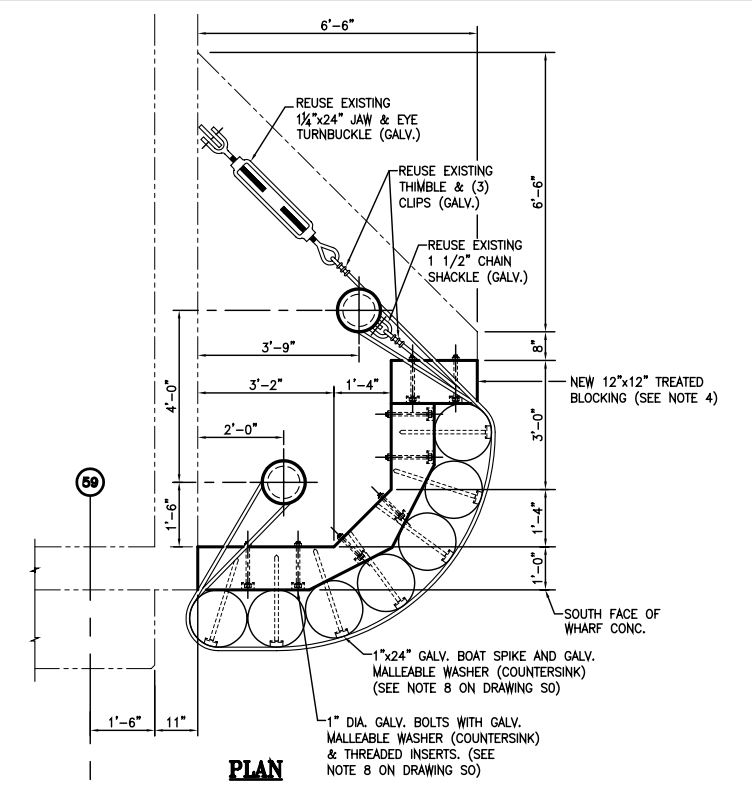
BLDG. 6



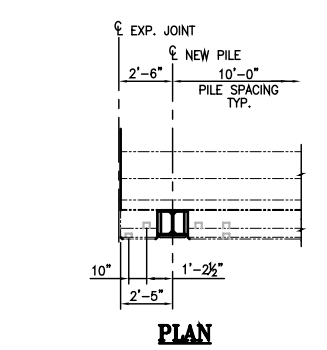
LOCATION PLAN
1"=30'



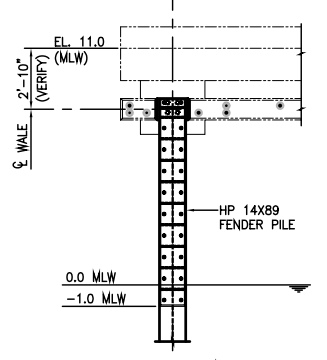
ELEVATION



PLAN

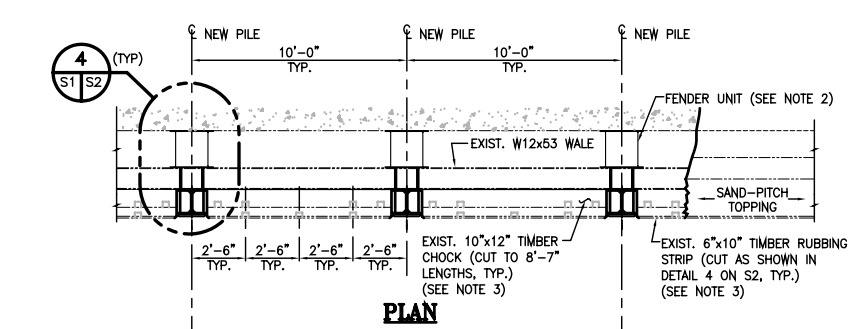


PLAN

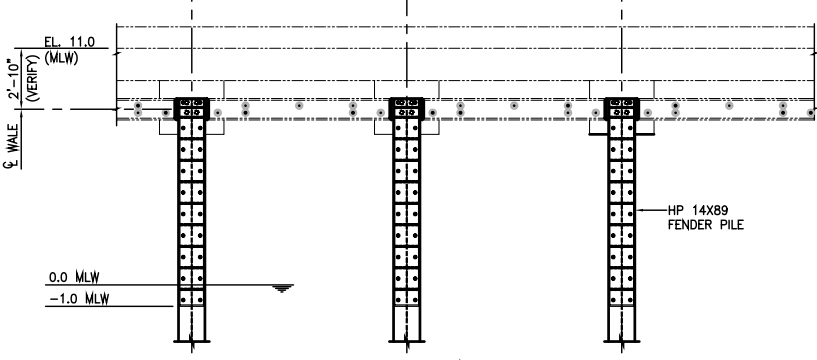


ELEVATION

DETAIL
1/4"=1'-0"

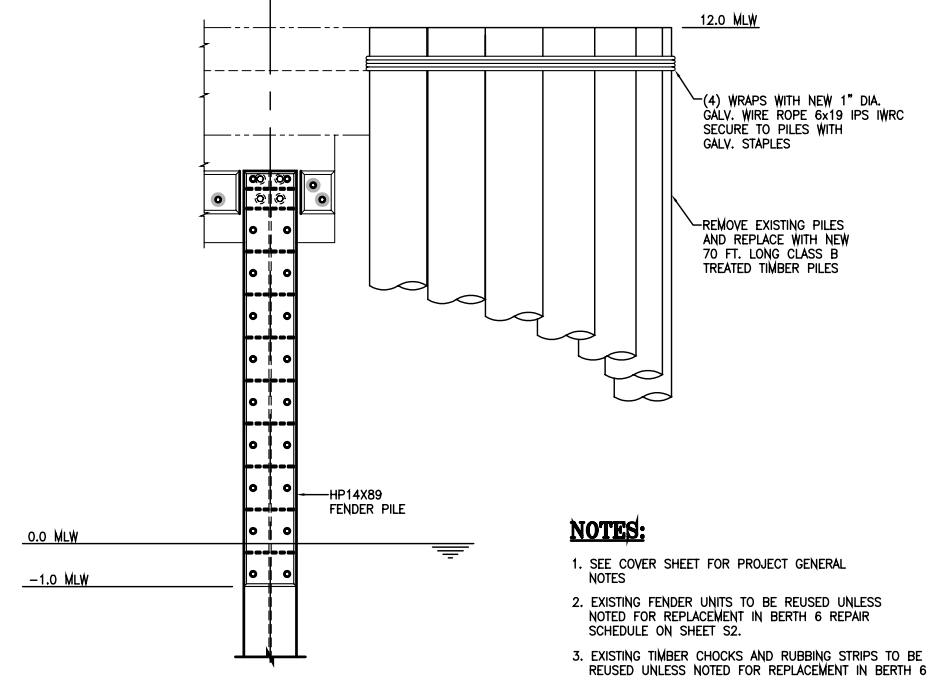


PLAN



ELEVATION

DETAIL
1/4"=1'-0"



ELEVATION

DETAIL
3
1/2"=1'-0"

NOTES:

- SEE COVER SHEET FOR PROJECT GENERAL NOTES
- EXISTING FENDER UNITS TO BE REUSED UNLESS NOTED FOR REPLACEMENT IN BERTH 6 REPAIR SCHEDULE ON SHEET S2.
- EXISTING TIMBER CHOCKS AND RUBBING STRIPS TO BE REUSED UNLESS NOTED FOR REPLACEMENT IN BERTH 6 REPAIR SCHEDULE ON SHEET S2.
- EXISTING PILING AND BLOCKING INDICATED IN DETAIL 3 SHALL BE REMOVED AND REPLACED IN KIND WITH NEW MATERIAL.

NOTE:
ALL DIMENSIONS SHOWN ARE FOR REFERENCE ONLY. IT IS THE RESPONSIBILITY OF THE CONTRACTOR TO FIELD VERIFY ALL DIMENSIONS FOR A PROPER FIT.

REV.	DATE	DESCRIPTION	BY
0	7-7-04	ISSUED FOR CONSTRUCTION	DWH
READY MIX USA			
Gottlieb, Barnett & Bridges, LLC Consulting Engineers			
Drawn By: D.W.H.		Date: 6/29/04	
Checked By: H.A.C.		Date: 6/29/04	
Scale:	Job No.	Drawing No.	REV.
NOTED	1714A	81	0

**PORT OF PENSACOLA
BERTH No. 6
FENDER UPGRADES**

**PLAN &
ELEVATIONS**

BERTH 6 REPAIR SCHEDULE

BERTH	PILE	6x12 RUBBING STRIP	10x12 CHOCK	WALE	RUBBER FENDER
1	•	•	•		•
2	•	•	•		•
3	•	•	•		•
4	•	•	•		•
5	•	•	•	○	•
6	•	•	•		•
7	•	•	•		•
8	•	•	•		•
9	•	•	•		•
10	•	•	•		•
11	•	•	•		•
12	•	•	•		•
13	•	•	•		•
14	•	•	•		•
15	•	•	•		•
16	•	•	•		•
17	•	•	•		•
18	•	•	•		•
19	•	•	•		•
20	•	•	•		•
21	•	•	•		•
22	•	•	•		•
23	•	•	•		•
24	•	•	•		•
25	•	•	•		•
26	•	•	•		•
27	•	•	•		•
28	•	•	•		•
29	•	•	•		•
30	•	•	•		•
31	•	•	•		•
32	•	•	•		•
33	•	•	•		•
34	•	•	•		•
35	•	•	•		•
36	•	•	•		•
37	•	•	•		•
38	•	•	•		•
39	•	•	•		•
40	•	•	•		•
41	•	•	•		•
42	•	•	•		•
43	•	•	•		•
44	•	•	•		•
45	•	•	•		•
46	•	•	•		•
47	•	•	•		•
48	•	•	•		•
49	•	•	•		•
50	•	•	•		•
51	•	•	•		•
52	•	•	•		•
53	•	•	•		•
54	•	•	•		•
55	•	•	•		•
56	•	•	•		•
57	•	•	•		•
58	•	•	•		NO VISUAL
59	•	•	•		NO VISUAL
CORNER	• (7)				
TOTAL	59(HP)7(T)	24	21	1	24

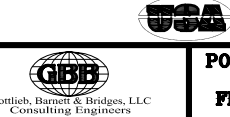
● UNIT TO BE REPLACED
 ○ APPROXIMATELY 10 FT. OF WALE TO BE REPLACED. (REPLACEMENT SECTION IS TO BE HOT DIP GALVANIZED)
 () QUANTITY IF MORE THAN ONE REQUIRED.

NOTES:

- SEE COVER SHEET FOR PROJECT GENERAL NOTES.
- EXISTING FENDER UNITS TO BE REUSED UNLESS NOTED FOR REPLACEMENT IN BERTH 6 REPAIR SCHEDULE ON SHEET S2.
- EXISTING TIMBER CHOCKS AND RUBBING STRIPS TO BE REUSED UNLESS NOTED FOR REPLACEMENT IN BERTH 6 REPAIR SCHEDULE ON SHEET S2.
- EXISTING WALES THAT ARE TO BE REUSED SHALL BE REMOVED, CLEANED AND PAINTED IN ACCORDANCE WITH THE PROJECT SPECIFICATIONS.

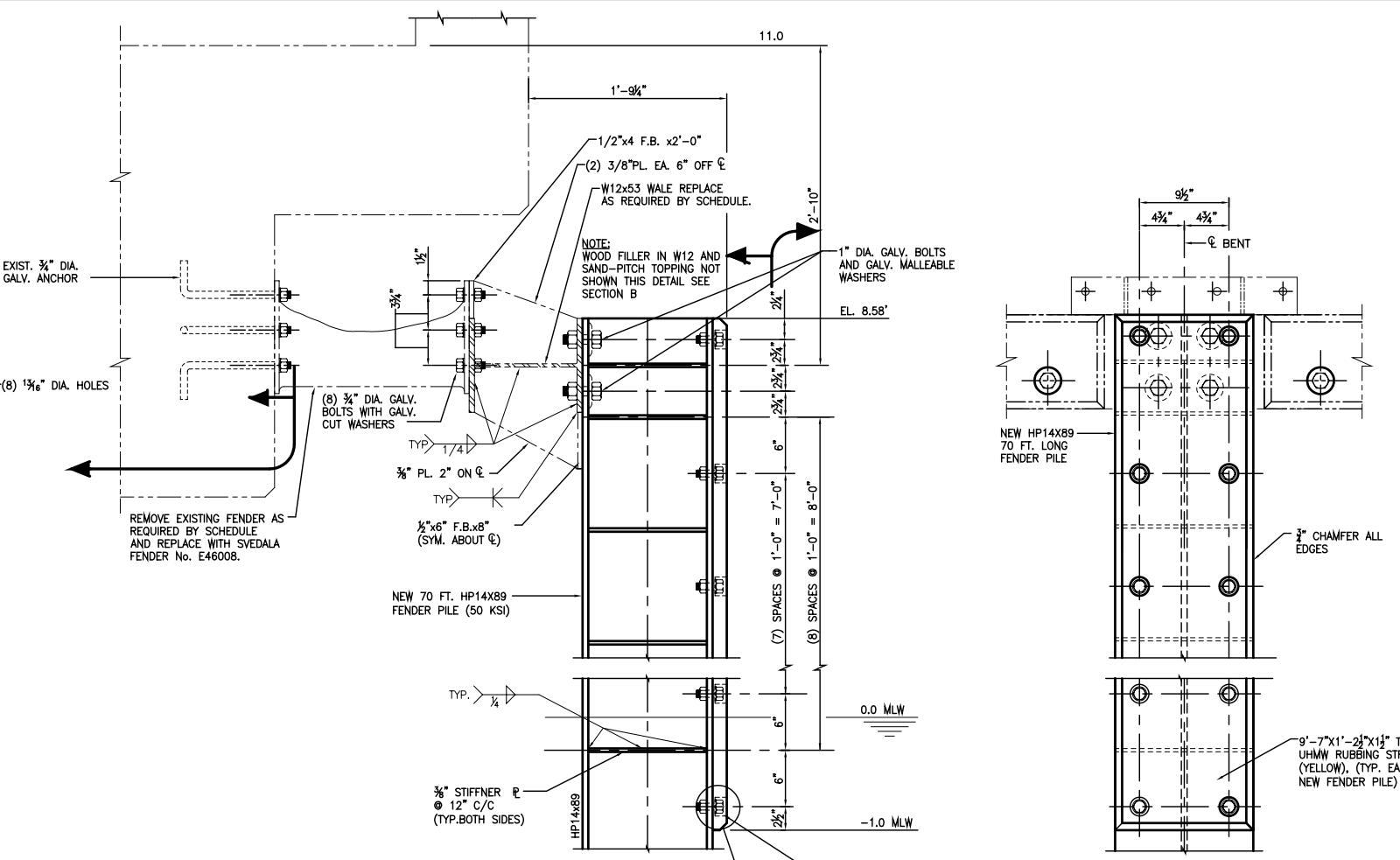
REV.	DATE	DESCRIPTION	BY
0	7-7-04	ISSUED FOR CONSTRUCTION	DWH

READY MIX USA



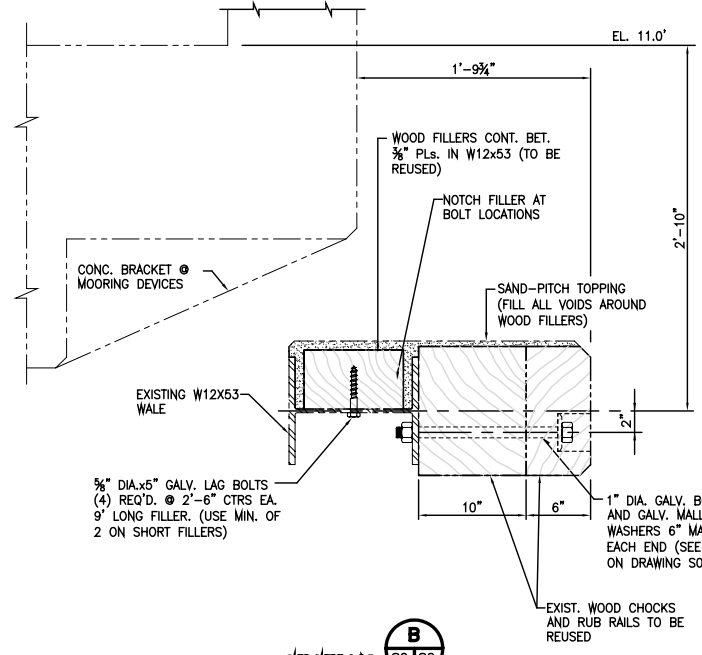
PORT OF PENSACOLA BERTH No. 6 FENDER UPGRADES

Drawn By: D.W.H.	Date: 6/29/04
Checked By: H.A.C.	Date: 6/29/04
Scale: NOTED	Job No. 1714A
Drawing No. 62	REV. 0

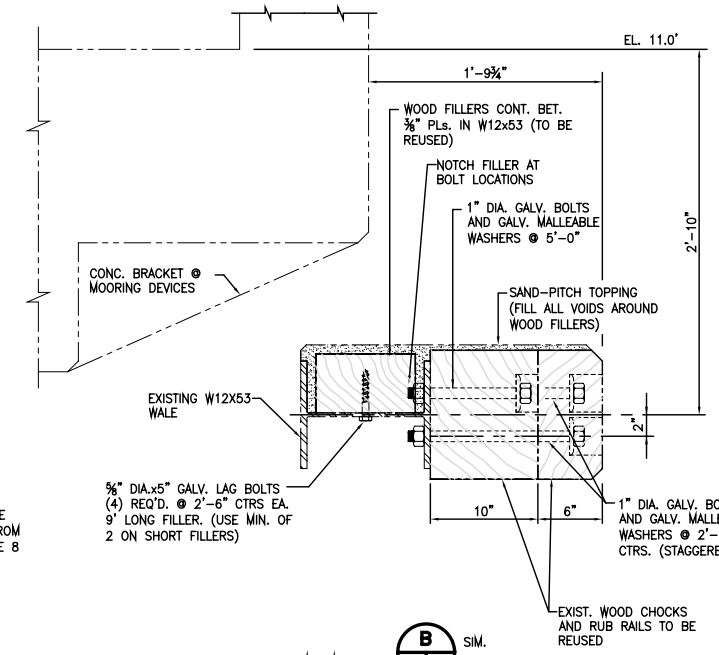


SECTION A
1/2"=1'-0"

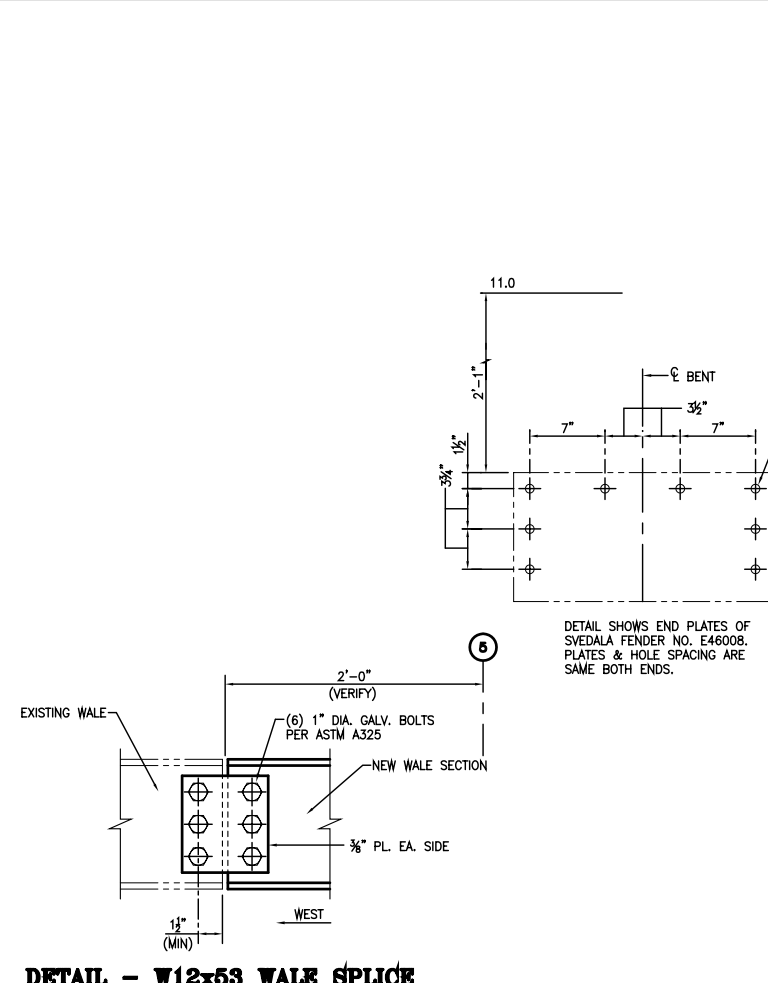
ELEVATION



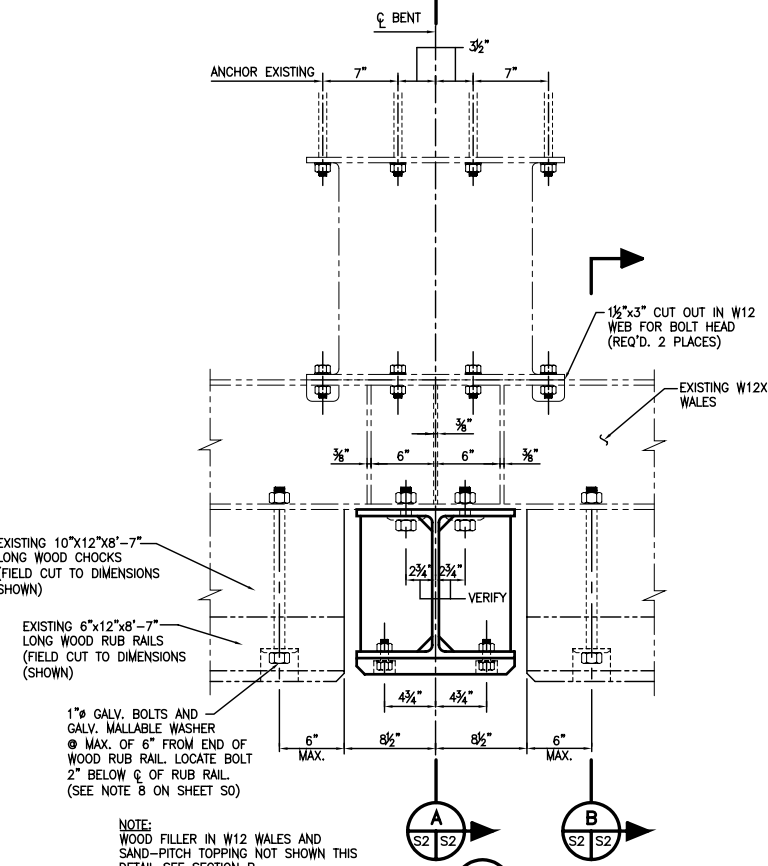
SECTION B
1/2"=1'-0"



SECTION B SIM.
1/2"=1'-0"



DETAIL - W12x53 WALE SPLICE
1/2"=1'-0"



DETAIL 4
1/2"=1'-0"

NOTE: WOOD FILLER IN W12 WALES AND SAND-PITCH TOPPING NOT SHOWN THIS DETAIL SEE SECTION B